

## DIGITAL CAD/CAM Restorations

NOTCH® offers a simple and smooth digital workflow through simplified, high-precision components.

Using the same scanbodies for all NOTCH® Implant Systems will speed-up oral/model scanning session and enable you having different implant models in the same jaw more confidently.

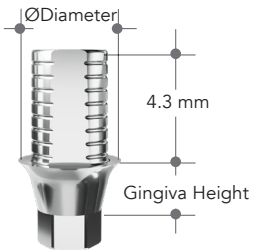


## Ti-Base Engaged (Single Tooth)

is used for single tooth temporary or final restorations. Retentive micro grooves on post provides better attachment to crown.



Profile D.	Gingiva Height	Post Height	Ref. Code
4	0.7	4.3	420710N
	2.5		422510N
4.5	0.7	4.3	420710R
	2.5		422510R

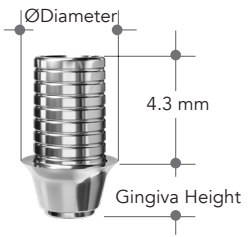


## Ti-Base Non-Engaged (Bridges/Bars)

is used for multiple tooth temporary or final restorations. Retentive micro grooves on post provides better attachment to crown.



Profile D.	Gingiva Height	Post Height	Ref. Code
4	0.7	4.3	420700N
	2.5		422500N
4,5	0.7	4.3	420700R
	2.5		422500R



## Premill Abutment

Customized abutments has major advantages over stock abutments where esthetics is prerequisite. With premilled hexagonal and conical part genuine NOTCH® premill abutments offer better and safer outcomes.



Profile D.	Type*	Post Height	Ref. Code
11,5	A	19,3	432011N
	B		442011N
11,5	A	19,3	432011R
	B		442011R



## Screw Retained Copings

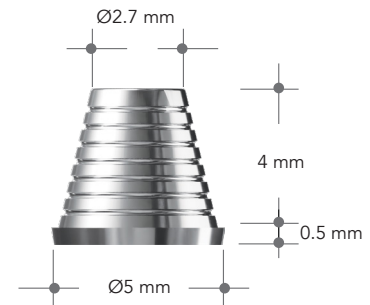
is used for CAD/CAM restorations on screw abutments. Engaged coping is used for single tooth and non-engaged is for bridges and bars.



Non-Engaged Coping



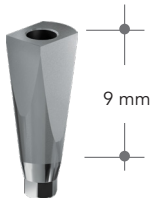
428000U



\*Type A indicates European Type Connection  
Type B indicates Non-European connection

# SCANBODY AND DIGITAL ANALOG

## Scanbody (Implant Level)



### Scanbody

NP	RP
400010N	400020R

### Digital Analog for Printed Models

NP	RP
321007N	321008R



## Ti-Base Abutment



Engaged  
(Single Tooth)

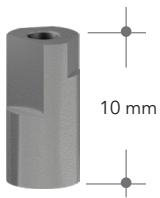


Non-Engaged  
(Bridges/Bars)

## Premill Abutment



## Scanbody (Implant Level)

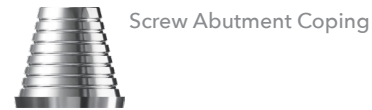


### Scanbody Screw Abutment

400030U

### Digital Analog for Printed Models

321009U



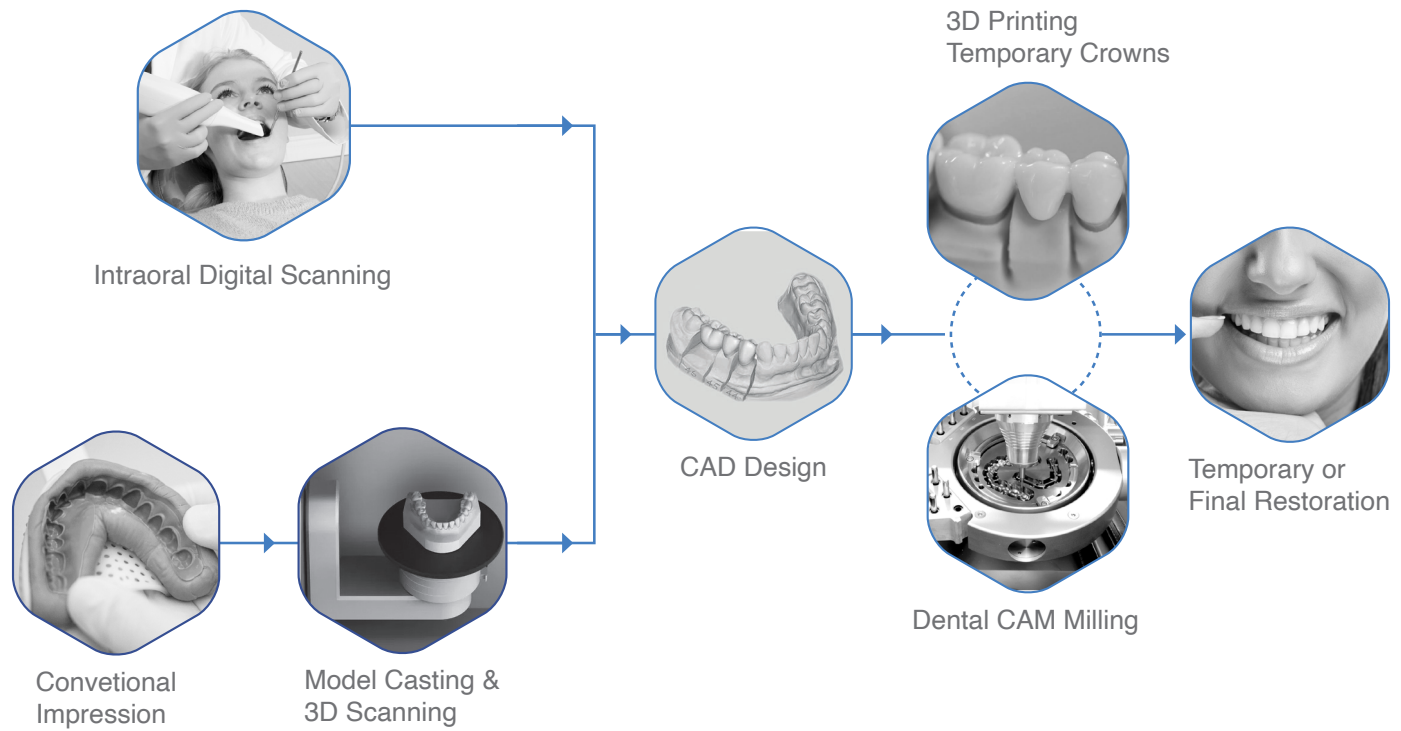
Screw Abutment Coping



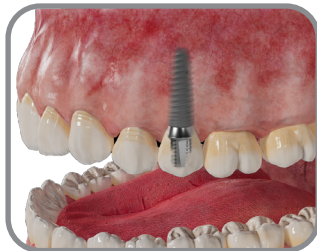
Screw Abutment

Angled Screw Abutment

## Digital Workflow



### Single Tooth



- Ti-Base Engaged Abutment
- Premill Abutment

### Bridges/Bars



- Ti-Base Non-Engaged Abutment
- Screw Abutment
- 17° Angled Screw Abutment
- 30° Angled Screw Abutment

### Full Arch



- Screw Abutment
- 17° Angled Screw Abutment
- 30° Angled Screw Abutment